



## ASSEMBLY INSTRUCTION

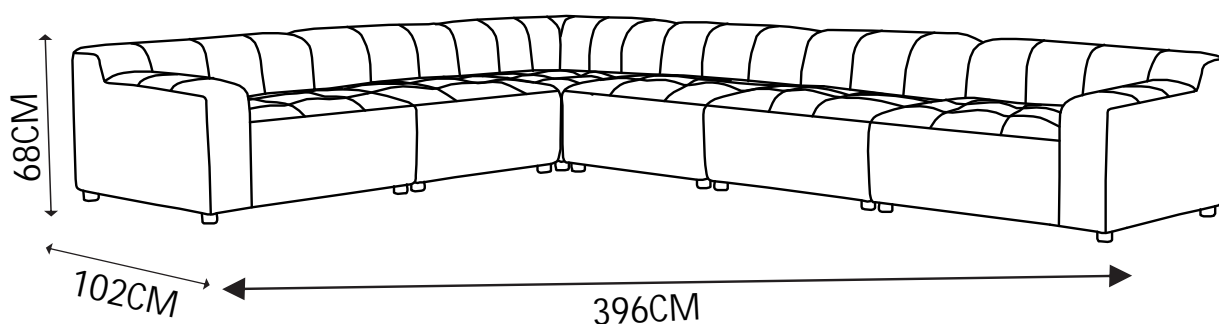
ROSELAND

ITEM CODE: 81353

Imported by Amart Furniture Pty Ltd, Qld, Brisbane Australia.

For any assistance with assembly or for missing parts please phone

Amart Furniture, Customer Service Free call 1800 351 084



Imported by Amart Furniture Pty Ltd, Qld, Brisbane Australia.

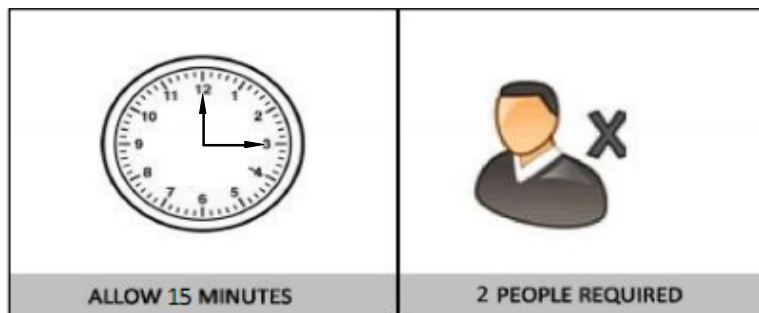
For any assistance with assembly or for missing parts please phone

Amart Furniture, Customer Service Free call 1800 351 084

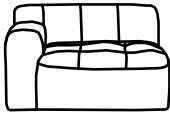
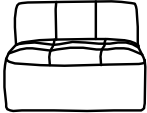
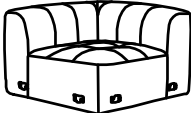
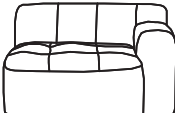


## PRE-ASSEMBLY PREPARATION

### Before you start:

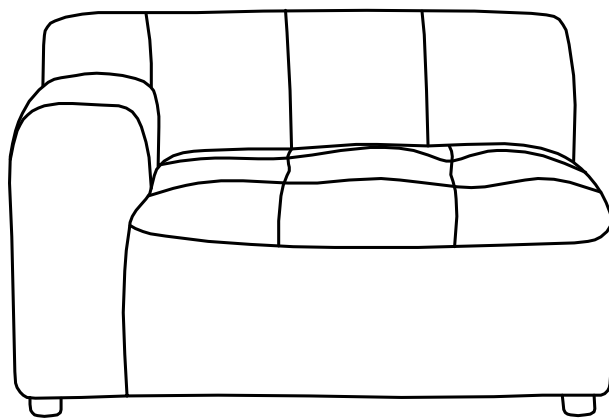
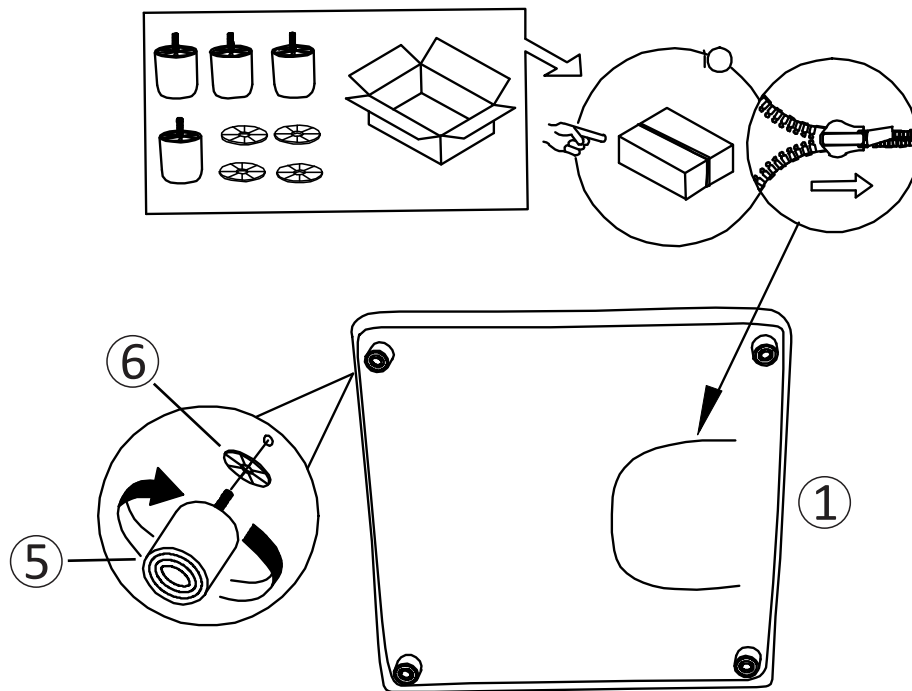
1. Choose a clean, level, spacious assembly area. Avoid hard surfaces that may damage the product
2. Take care when lifting. Product should be assembled as near as possible to the point of use
3. Ensure that you have all required contents for complete assembly
4. Always read the assembly instructions carefully before beginning assembly
5. Keep all hardware parts and packaging out of reach of small children
6. Do not over tighten the screws and bolts as this may damage the threads
7. Do not use a knife when opening
8. Read carefully all electrical safety usage warnings



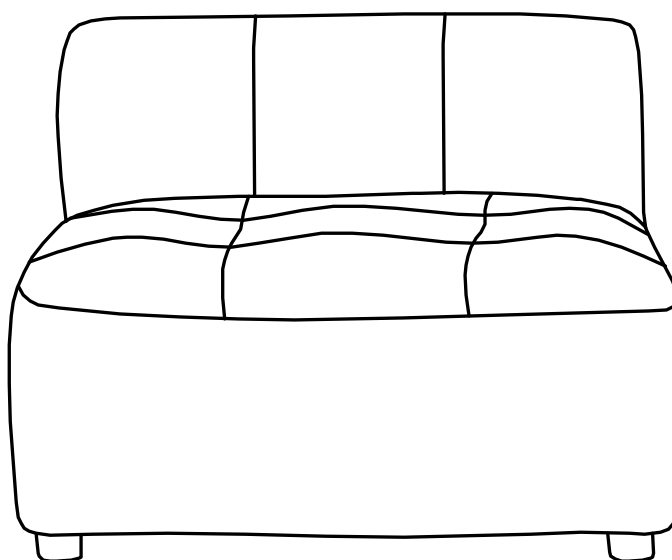
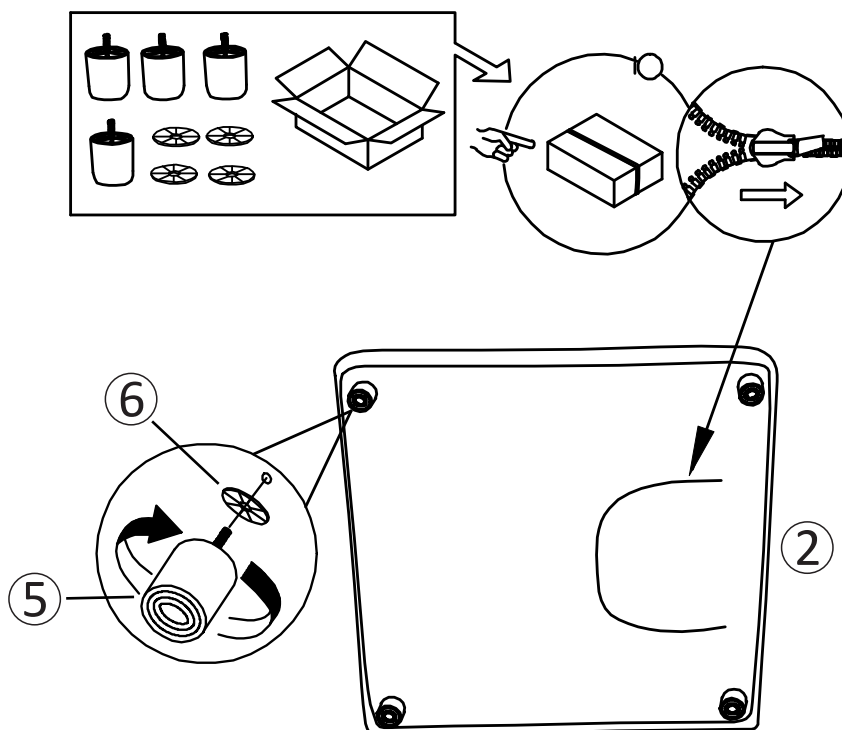
## PARTS LIST

①		Left Seat	1pc
②		Middle Seat	3pcs
③		Corner Seat	1pc
④		Right Seat	1pc
⑤		Foot	24pcs
⑥		Gasket	24pcs

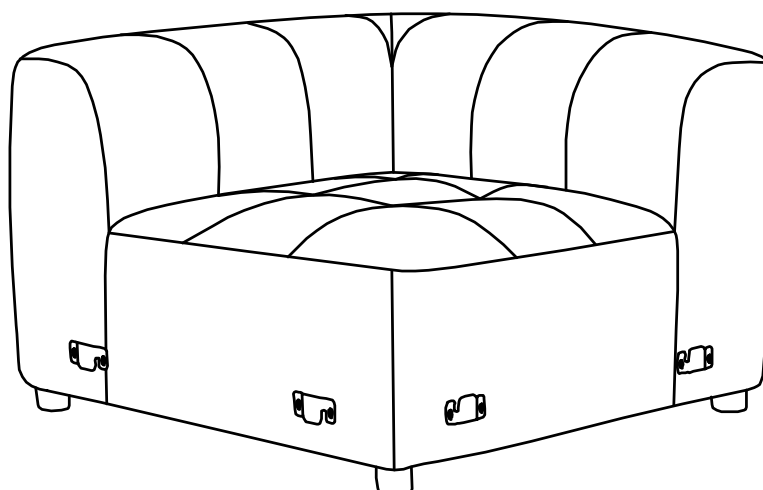
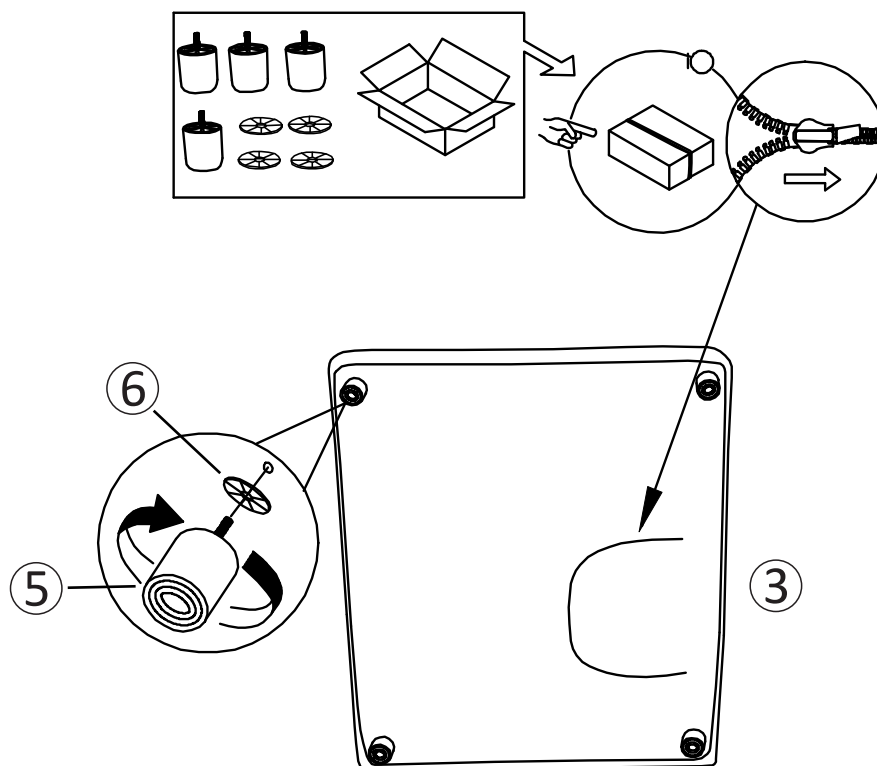
**STEP 1:** Take out the accessory package at the bottom of the sofa and install legs on the left seat ①.



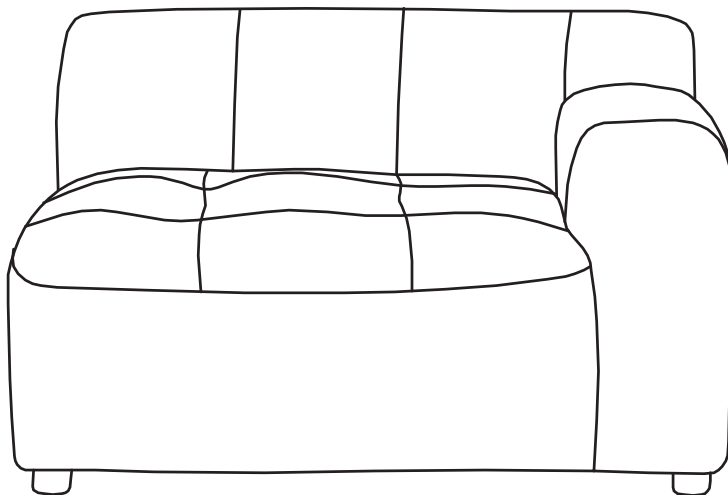
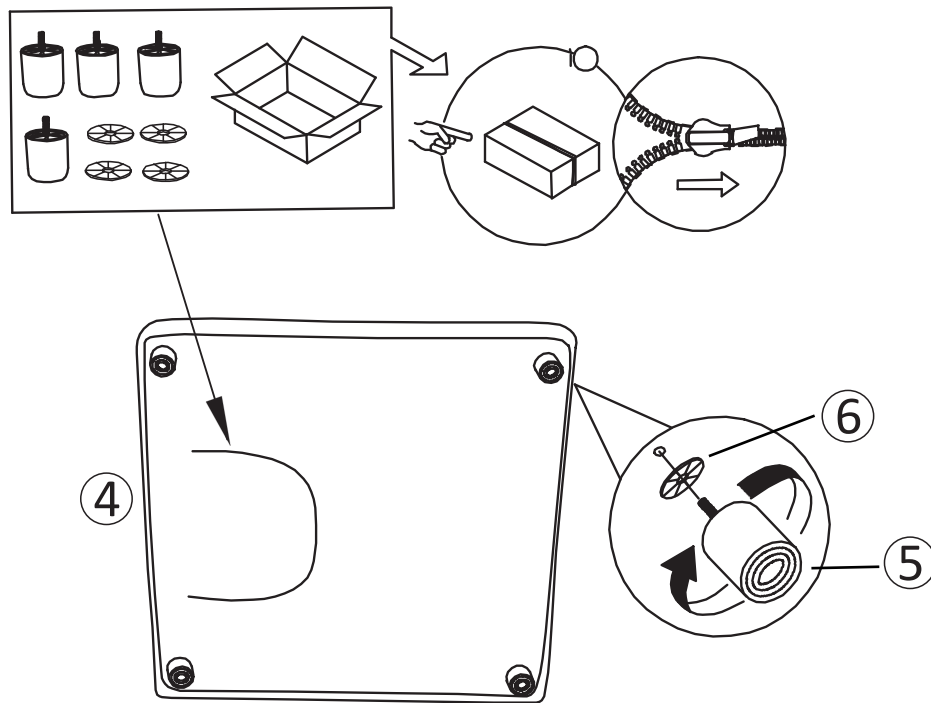
**STEP 2:** Take out the accessory package at the bottom of the sofa and install legs for the middle seat ②.



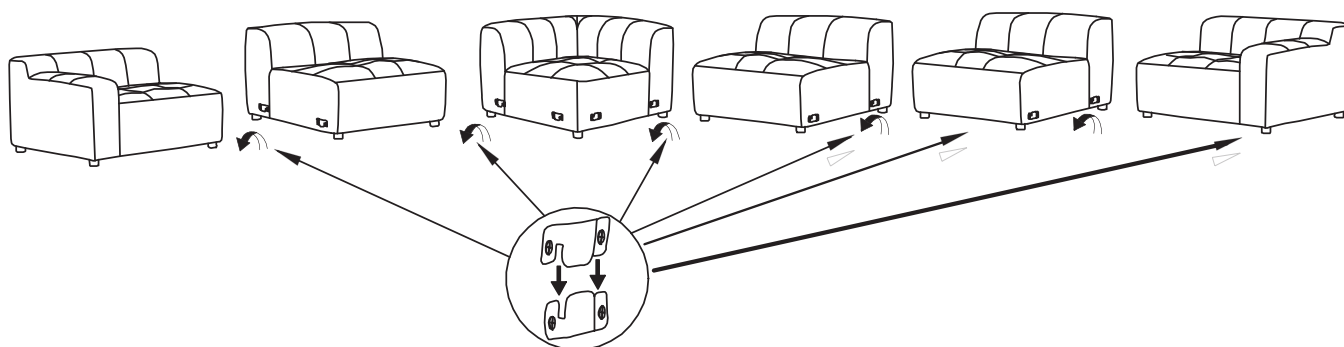
STEP 3: Take out the accessory package at the bottom of the sofa and install legs for the corner seat ③.



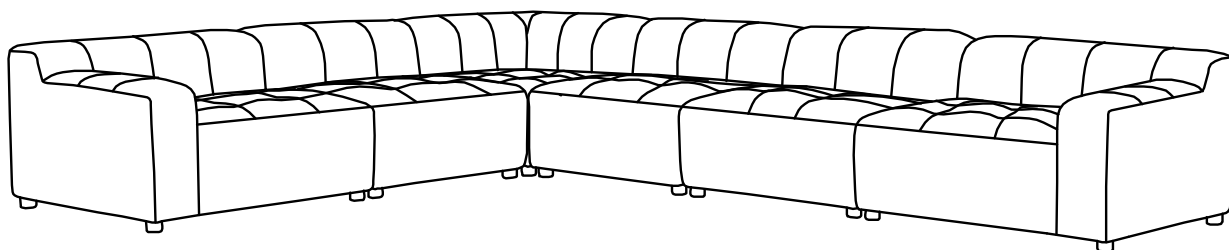
**STEP 4:** Take out the accessory package at the bottom of the sofa and install legs on the right seat ④.



STEP 5: Assemble all installed parts together.



ASSEMBLY IS COMPLETE





# FABRIC CARE AND MAINTENANCE



## **REGULAR CARE:**

- Protect from direct sunlight.
- Vacuum regularly using low suction.
- Rotate reversible cushions regularly.

## **CLEANING:**

- Do not remove cushion covers for separate cleaning even though they may have zippers.
- Do not wash, Do not dry clean, Do not shampoo clean.
- Clean only with hot water extraction machine. Professional cleaning recommended.
- Do not use dishwashing liquid or laundry detergent.
- Use only upholstery detergents.
- Do not wet filling.
- Dry in shade away from direct heat and sunlight.
- Allow to dry thoroughly before re-use.

## **SPOT CLEANING:**

- Do not rub.
- Do not spot clean with any solvent.
- Treat spills and stains as soon as possible.
- Gently scrape off any soil or blot any liquid from the surface of the fabric before applying cleaner.
- Apply proprietary cleaning agents strictly according to instructions to remove the residue of the spill.
- Do not saturate the fabric or interior with water or other cleaning liquids.

## **WARNING:**

Apply only water-based soil resist (fabric protection) treatments. Do not use aerosol products

\* PILLING IS NOT A FABRIC DEFECT OR FAULT AND IS NOT COVERED BY WARRANTY.

\* PILLING IS A NORMAL OCCURRENCE IN WOVEN FABRICS AND DOES NOT AFFECT THE DURABILITY OR FUNCTIONALITY OF THE FABRIC. IT IS EASILY REMOVED BY USE OF A BATTERY OPERATED DE-PILLING MACHINE AS THE NEED ARISES.