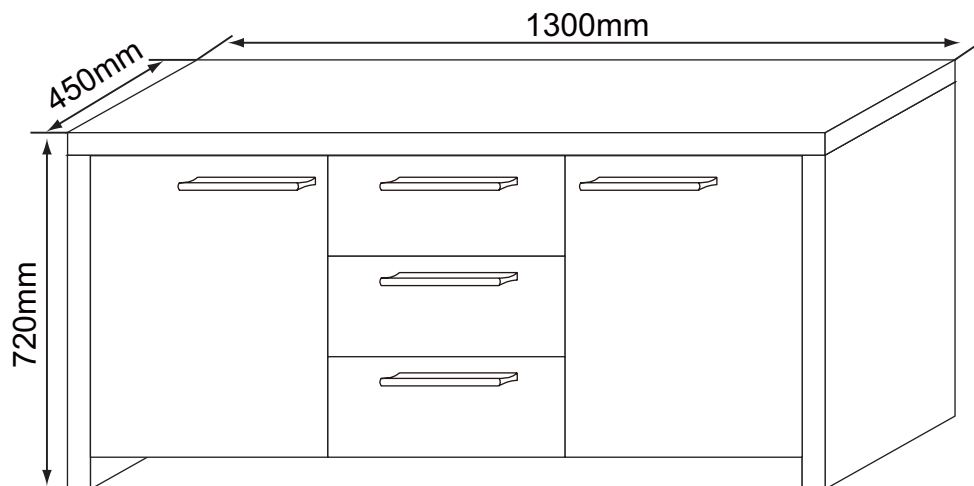


Assembly Instruction



Item Code: 51838

SUMMIT BUFFET

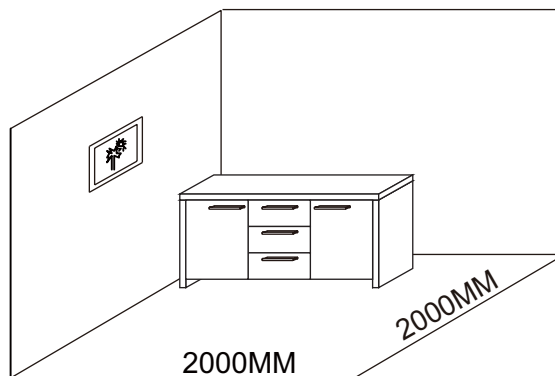


Please read the assembly instruction carefully before assembling.

**IMPORTED BY AMART FURNITURE PTY LTD, BRISBANE,
QLD, AUSTRALIA**

CUSTOMER SERVICE FREECALL 1800 351 084





ALLOW 60 MINUTES	PEOPLE REQUIRED
ADDITIONAL TOOLS REQUIRED	

WARNING

Serious or fatal injuries may occur from furniture toppling over. To help avoid this please follow the below recommendations:

- Install the provided "Tipping Kit" as per the instructions
- Never allow children to climb on or hang off of any part of this product
- Unless specifically designed to accommodate, do not set TVs or other heavy objects on top of this product

If this product has drawers:

- Place the heaviest items in lowest drawers
- Do not open more than 1 drawer at a time as this may cause the product to become unbalanced
- Do not tamper with or remove any drawer interlocking/running system

Note: The use of the provided "Tipping Kit" may reduce but not necessarily eliminate the risk of furniture toppling over. Please use this product with caution.

This is a permanent label. Do not attempt to remove!

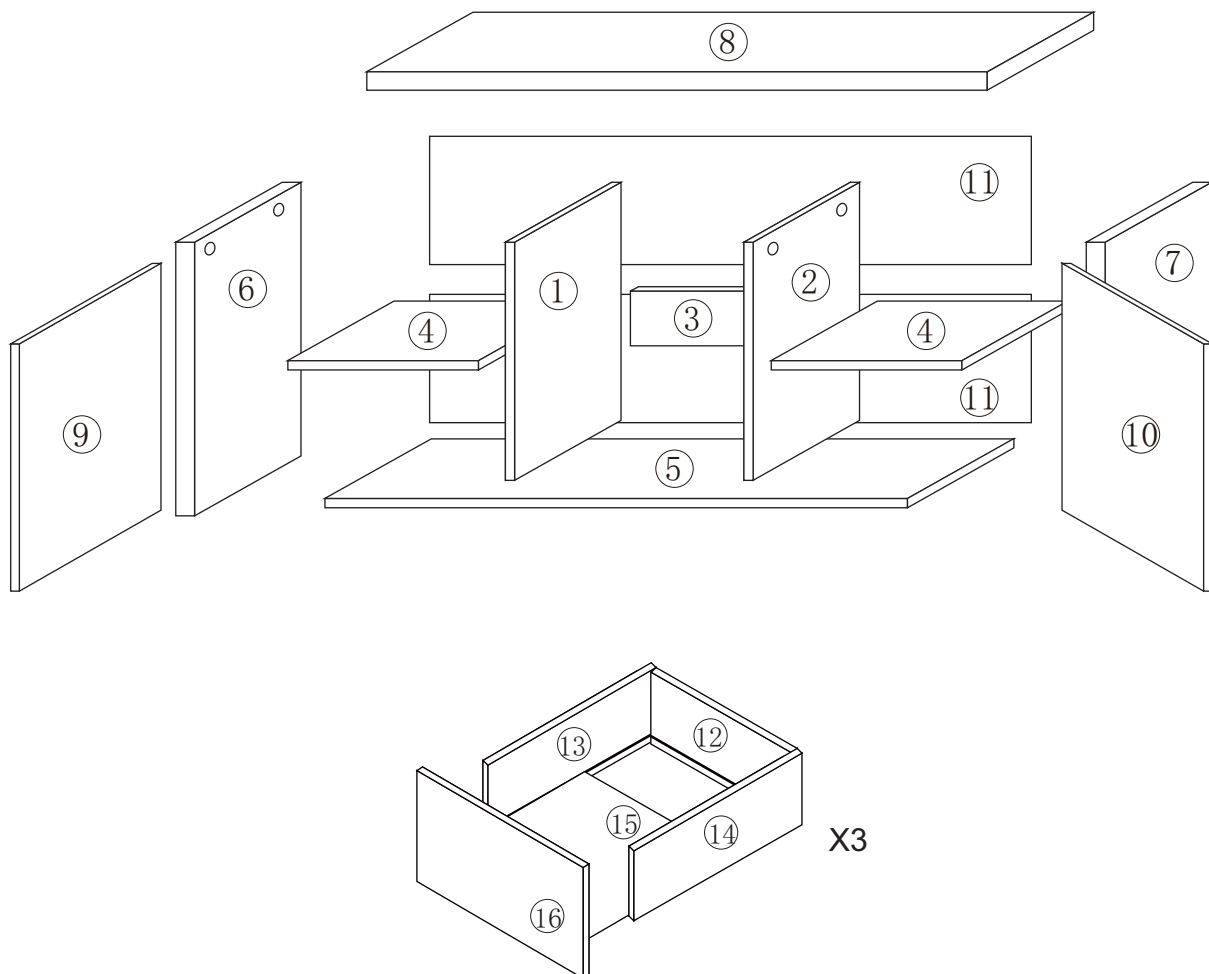
Assembly is to be carried out by a competent adult only.

During assembly children should be kept away from the product due to possible risk of injury.

Do not use this item if any components are missing or damaged.

Please keep these instructions for future reference.


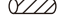




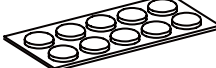

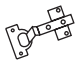







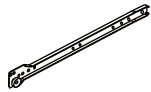
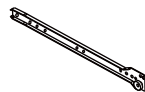
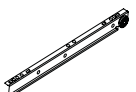

EXPLODED EXAMPLE



CHECKLIST

Before you start.....

1. Choose a clean, level, spacious assembly area. Avoid hard surfaces that may damage the product.
2. Check and ensure that you have all required contents for complete assembly.
3. Always read the assembly instructions carefully before beginning assembly.
4. The packaging and contents can be a choking hazard. Please keep out of reach of small children at all times.
5. Do not over tighten the bolts as this may damage the thread.

<input checked="" type="checkbox"/>	A <input type="checkbox"/> screw  M5x40mm 20xA	B <input type="checkbox"/> dowel  M8x30mm 18xB	C <input type="checkbox"/> cam pin  M7x39mm 16xC	D <input type="checkbox"/> cam lock  M15x12mm 32xD	E <input type="checkbox"/> adjustable leg  2xE
F <input type="checkbox"/> white foot nail  4xF	G <input type="checkbox"/> anticollision particles  10xG	H <input type="checkbox"/> wall fixing  M4x30mm M3.5x14mm 1xH	I <input type="checkbox"/> hinge  4xI		
J <input type="checkbox"/> round head screw  M3x16mm 16xJ	K <input type="checkbox"/> handle  5xK	L <input type="checkbox"/> mushroom head screw  M4x12mm 8xL	M <input type="checkbox"/>  1xM	N <input type="checkbox"/> screw  M3.5x14mm 52xN	
O <input type="checkbox"/> dowel  M8x50mm 8xO	P <input type="checkbox"/> cam pin  M7x53mm 16xP	CL <input type="checkbox"/> runner  3xCL	CR <input type="checkbox"/> runner  3xCR	DL <input type="checkbox"/> runner  3xDL	
DR <input type="checkbox"/> runner  3xDR					

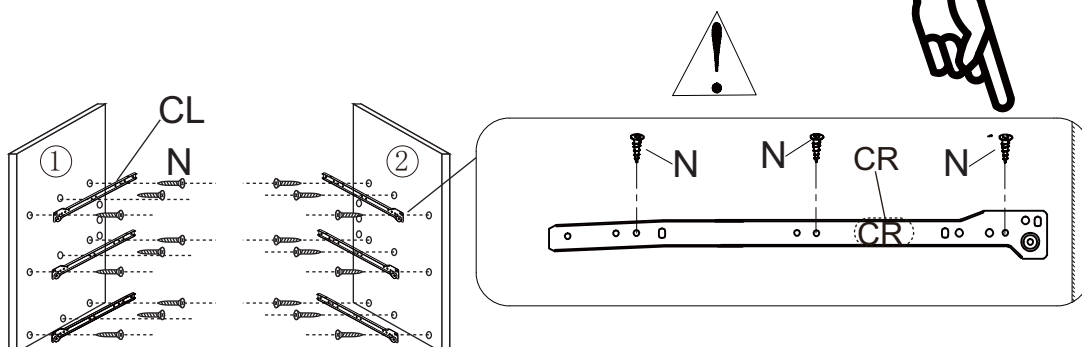
PART NUMBER	QTY	DIMENSIONS (MM)
1&2	2	607x429x15
3	1	428x140x15
4	2	428x387x15
5	1	1236x430x15
6&7	2	448x685x30
8	1	1300x450x30
9&10	2	390x618x15
11	2	220x1280x2.7
12	3	140x377x15
13&14	6	140x330x15
15	3	384x322x2.7
16	3	202x443x15

1



STEP 1: Install runner (CL) to panel (1)&(2) with screws (N) .

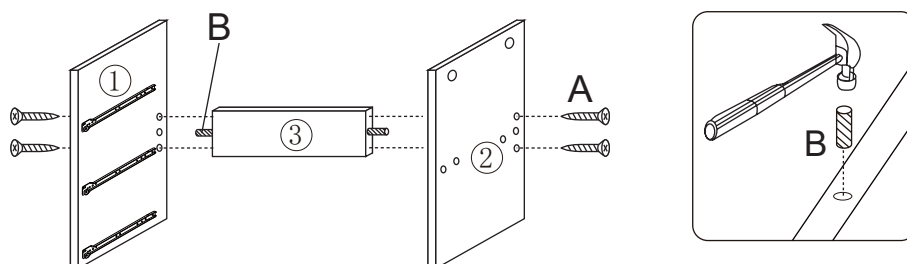
Please pay attention to screw location as shown in diagram.



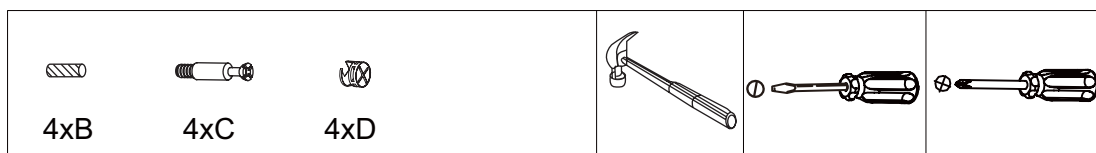
2



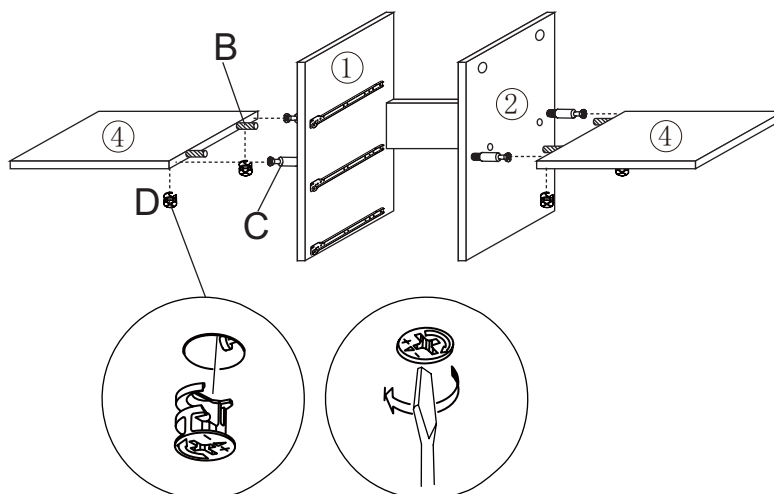
STEP 2: Fix panel (3) between side panel (1)&(2), using screw (A) and dowel (B).



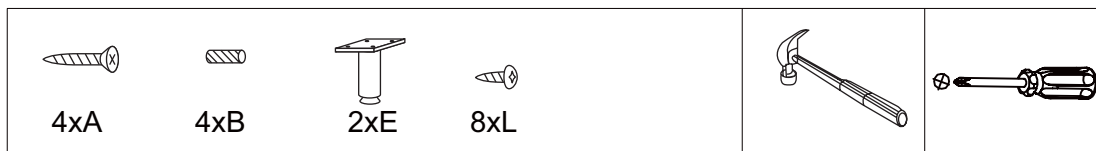
3



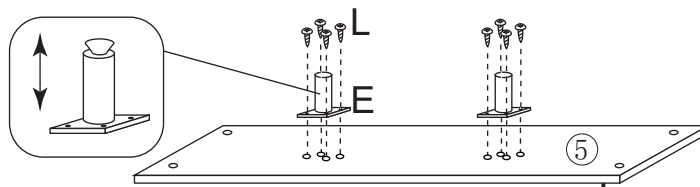
STEP 3: Attach panel (4) to panel (1)&(2), using dowel (B) and cam lock part (C)&(D).



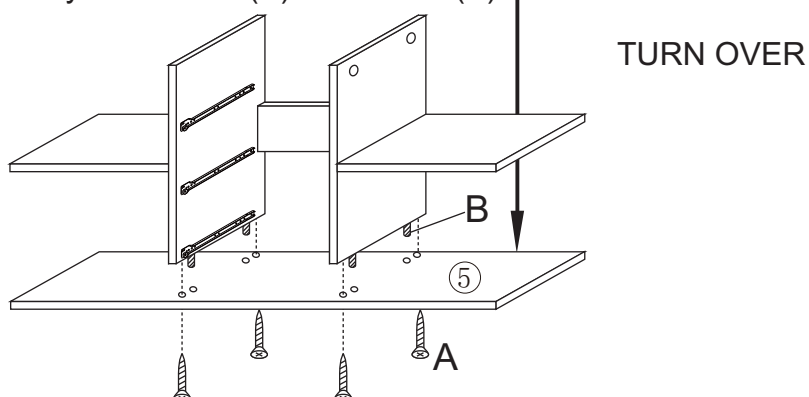
4



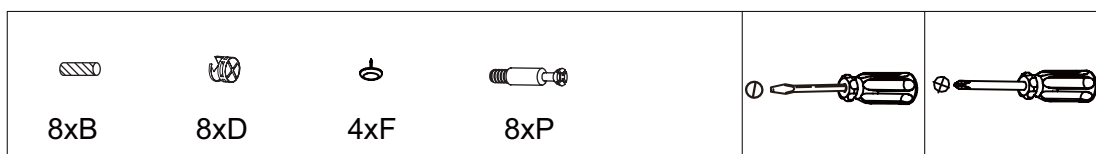
STEP 4A: Attach legs (E) to panel (5), using screws (L) .



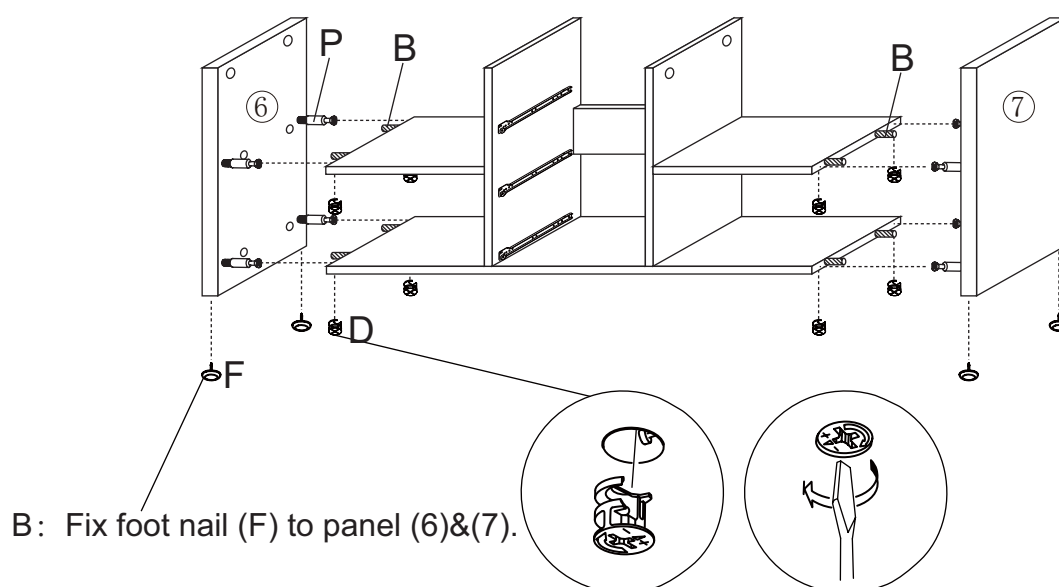
B: Attach panel (5) to the body with screw (A) and dowel (B).



5

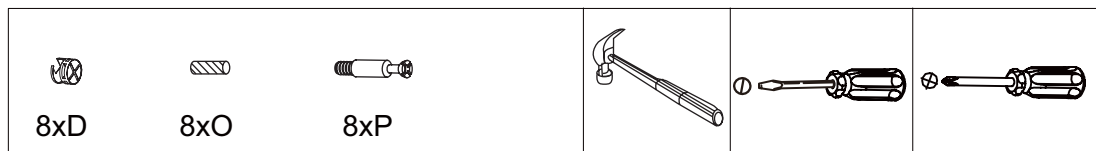


STEP 5A: Attach panel (6)&(7) to the body with dowel (B) and cam lock parts (D)&(P).

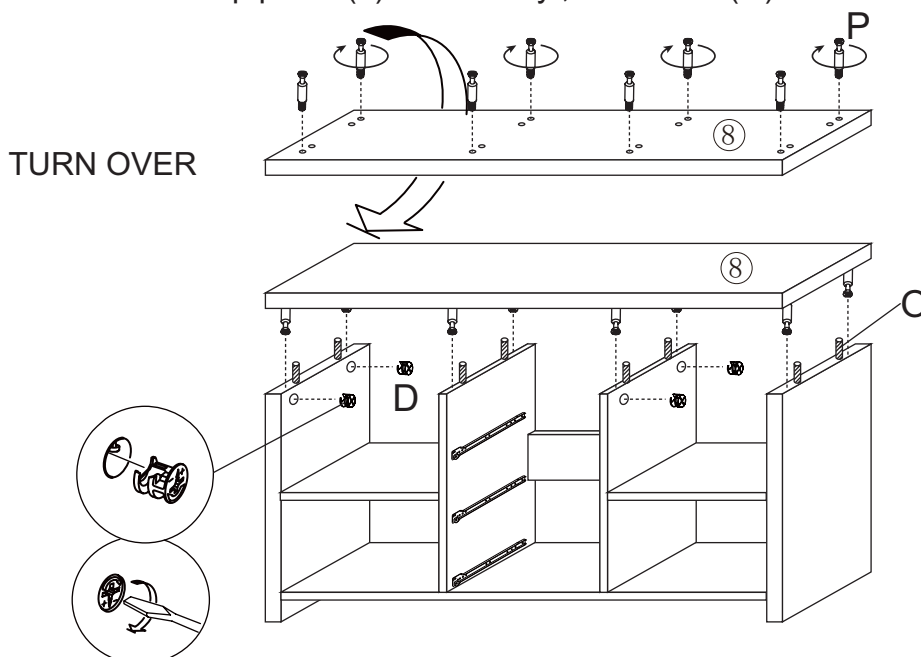


Amart
Furniture

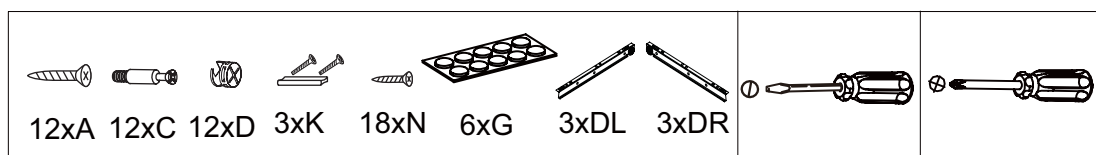
6



STEP 6: Fix top panel (8) to the body, with dowel (O) and cam lock parts (D)&(P).

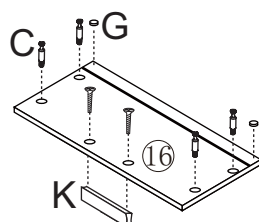


7

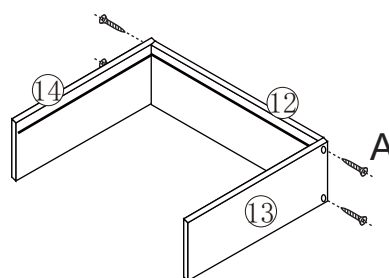


STEP 7: Install drawers as shown in diagram.

1A: Fix cam lock (C) and handle (K) to drawer front (16)
1C: Stick part (G) to drawer corners to reduce noise when opening.

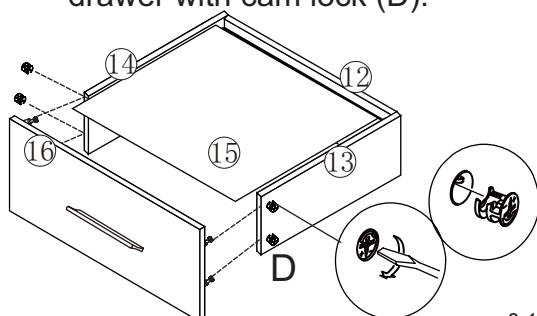


2: Join side panels (13)(14) and back panel (12) with screws (A).

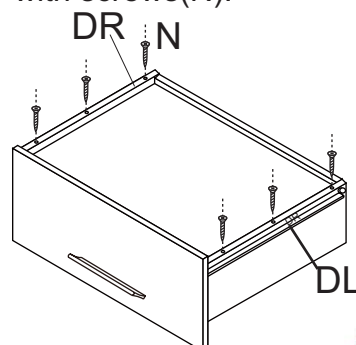


3A: Put bottom panel (15) into groove of panel (13)(14) and (12).

3B: Attach drawer front (16) to the drawer with cam lock (D).



4: Install runner (DL) to the bottom of drawer with screws (N).

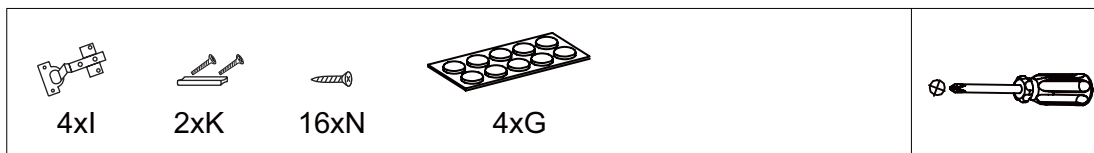


x3

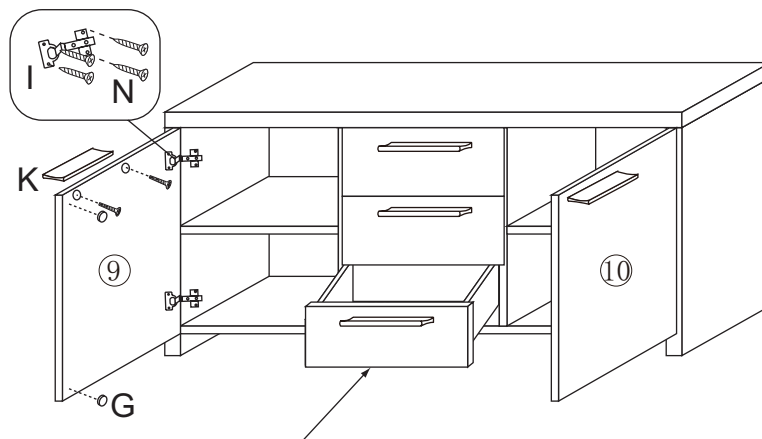
Amart
Furniture

Item Code: 51838

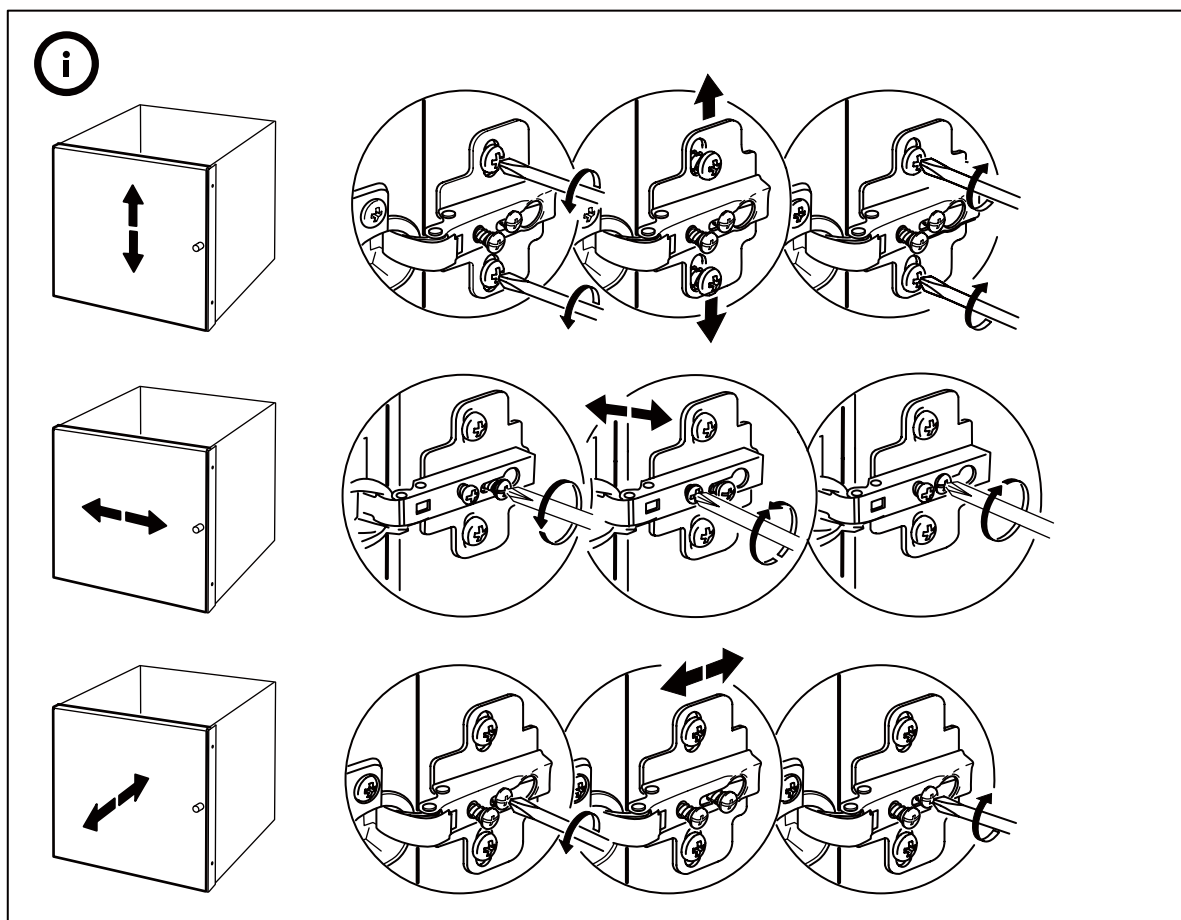
8



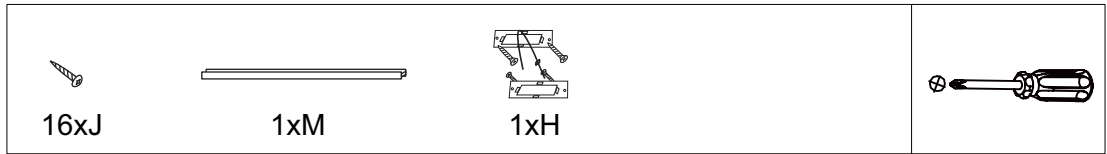
STEP 8A: Install hinges as shown in diagram, and stick part (G) to door corners to reduce noise when opening.



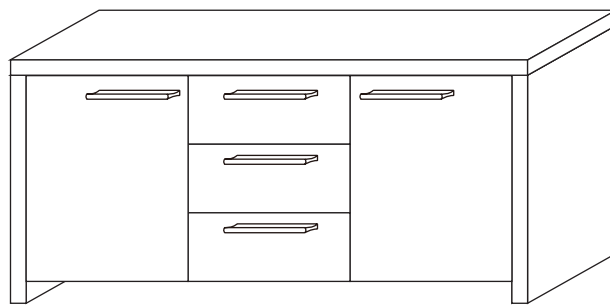
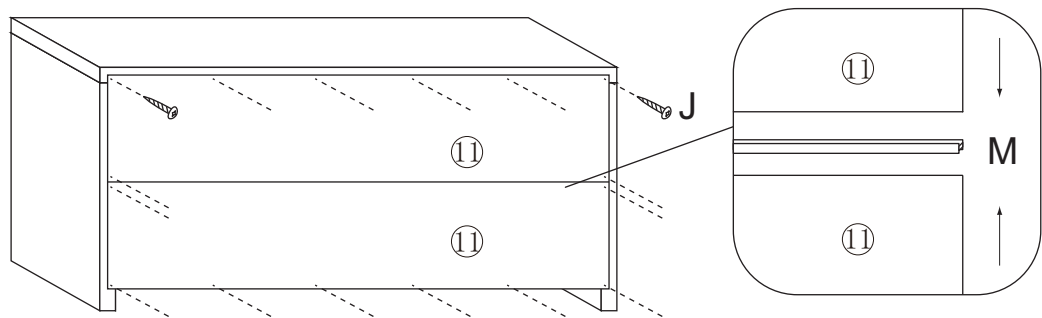
B: Assemble drawers to the body.

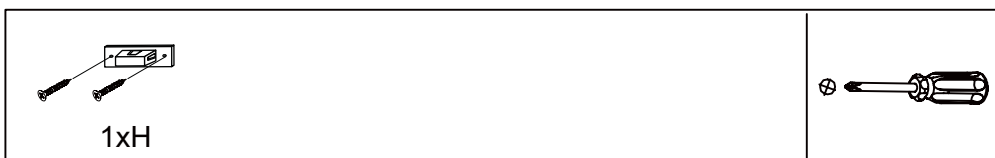


9



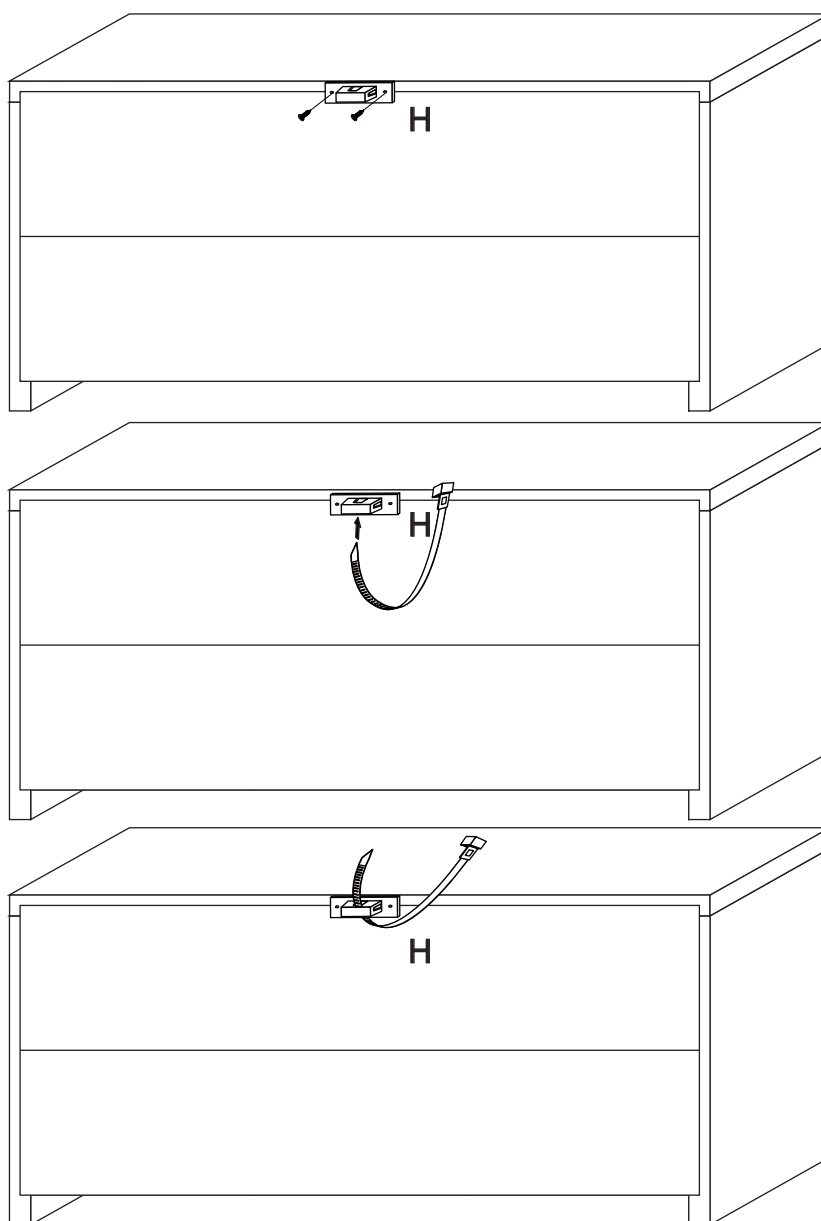
STEP 9: Join two back panels with filler (M), and attach back panel (11) to the body with screw (J).





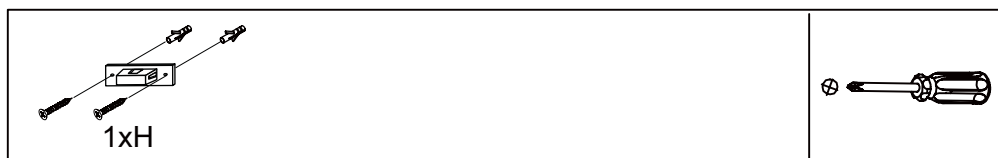
STEP 1: Fix bracket to back panel using screws M3.5*14MM .
Put plastic string into bracket.

NOTE - This product must be fixed to a wall. Please ensure the correct wall fixings are used. Failure to do so may result in personal injury or cause property damage if the product topples over. Please note that the screws are only suitable for plasterboard wall materials, please contact local hardware store for corresponding screws for other wall materials.

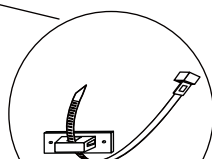
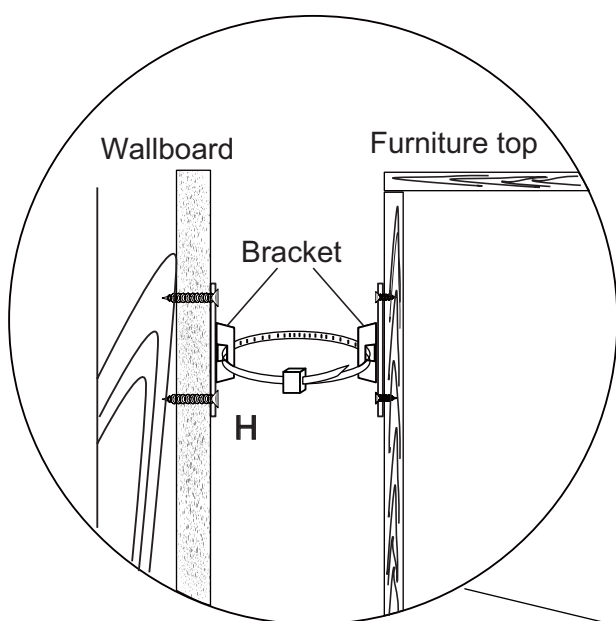
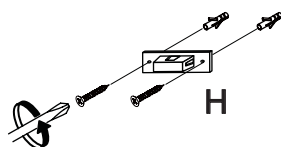


Amart
Furniture

Item Code: 51838



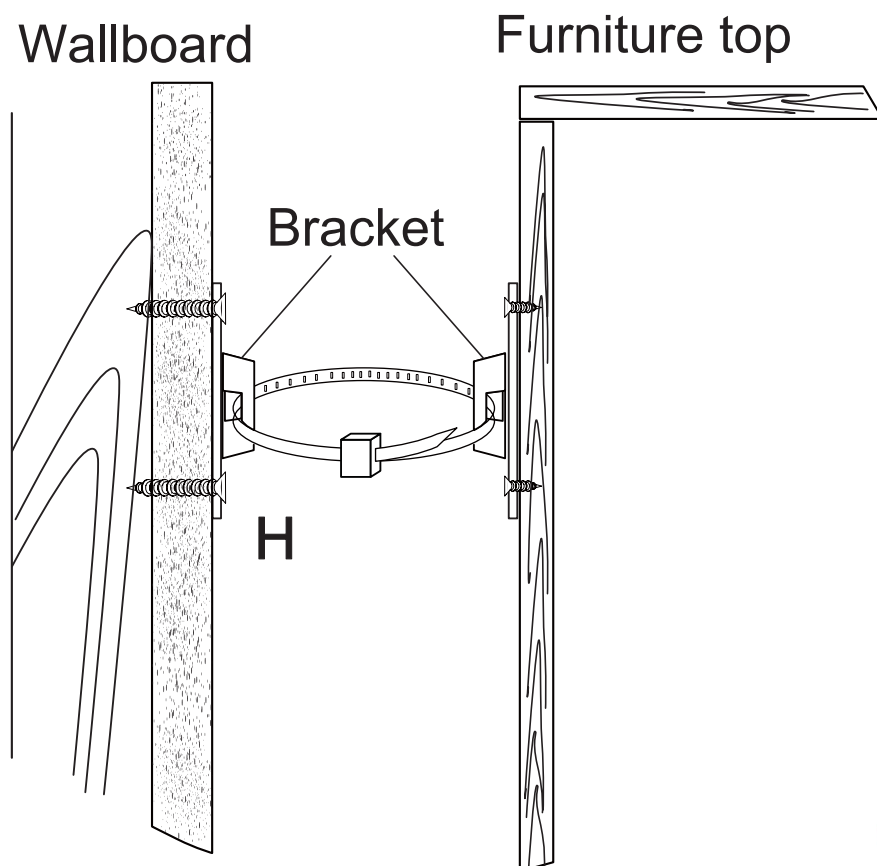
STEP 2: Fix bracket onto the wall using screws M4*30MM.
Join wallboard and the furniture with plastic sting.





SAFETY BRACKETS INSTRUCTIONS

1. Attach a bracket to the wallboard with the long screws provided.
2. Attach a bracket to the furniture frame under the top with the short screws provided.
3. Move the furniture into its final position. Thread a strap through the bracket as shown in the illustration, tighten strap until snug. Do not over tighten.
4. Make sure the bracket is firmly attached to the wallboard and furniture, and the strap is snug.



PRODUCT CARE:

To protect your furniture, we suggest the following:

- *Avoid placing your furniture in direct sunlight.

- *Do not place furniture directly under windows.

- *Do not place sharp materials (knife, fork, etc) directly onto your furniture as sharp material may scrape and damage the finish.

Do not place material with high temperature directly onto the surface of your furniture.

- *Protective padding is strongly recommended when using your furniture .

- *Clean up spills quickly. Water left over a prolonged period of time may cause damage. Alcohol, perfume, nail polishes, aftershave and some medication may cause severe finish damage if not cleaned immediately.

- *Use a clean, soft, dry, lint free absorbent cloth to clean your furniture. Do not use any detergent as they may contain ingredients that may react and damage the finish.