

SIGNATURE

COLLECTION

LOUNGE CARE GUIDE

I GOT IT AT
Amart
Furniture

CONTENT

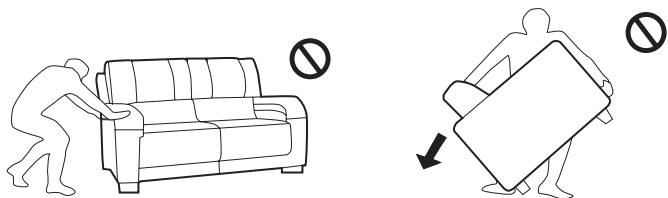
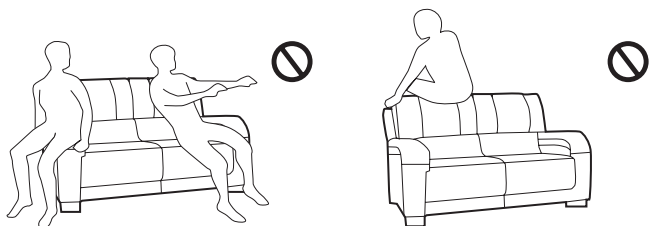
Introduction	2
Your new sofa	3
Care and maintenance	5
Upholstery care	5
Leather care	9
Fabric care	10
All about leather	11
Natural leather characteristics	13
Operating instructions for electric recliner	15
Sofas with adjustable headrests and armrests	18

INTRODUCTION

Congratulations on the purchase of your Signature Collection Sofa.

Thank you for placing your trust in Amart Furniture. We are one of Australia's largest furniture retailers and trusted brands.

I GOT IT AT
Amart
Furniture



YOUR NEW SOFA

PLEASE NOTE THE FOLLOWING:

You may notice a few crease marks on your new sofa created during the delivery journey. Do not be alarmed as they will fade naturally over a few weeks.

Do not worry if your sofa feels different from our showroom's as seat cushions gradually soften with use.

Use floor protectors if your sofa is to be placed on floorboards. They are available from your local hardware store.

Do not jump, or stand on your sofa.

Do not sit on the sofa arms and/or the backrest.

Do not tilt your sofa and drag it across any surface, especially rough surfaces such as carpets or uneven flooring.

Always move your sofa by lifting it at the base. Do not push or pull on the armrests

Do not allow pets on your sofa.

Do not consume food or drink on your sofa.

I GOT IT AT
Amart
Furniture

CARE AND MAINTENANCE

This guide has been designed to help you make the most of your purchase. With proper care and maintenance, your Amart sofa will last for years.

Please follow the procedures outlined in this guide.

UPHOLSTERY CARE

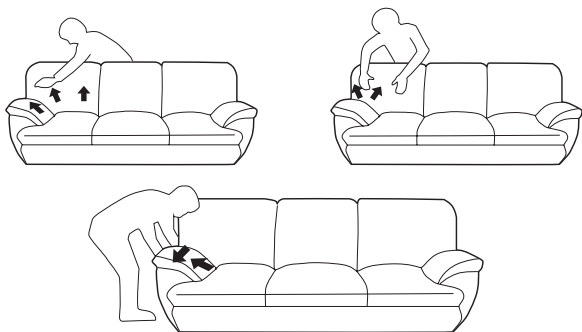
Remodel the upholstery by pulling and smoothing the end of the sofa with one hand, and beating it with the other.

Repeat the action for each armrest. Work from the inside out.

Reshape the backrest cushions by patting and beating them with both hands.

Pat and beat the backrest cushion with one hand, using the other to hold the back of the seat.

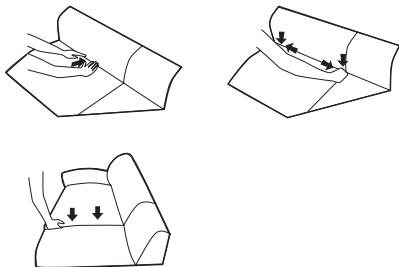
RESHAPING OF CUSHION



DRESSING

Stretch out and level the dressing by applying pressure on the seat covering after use.

Smoothen any folds or creases in the seats by running your hands firmly over them.

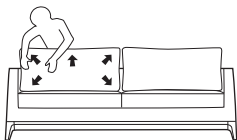
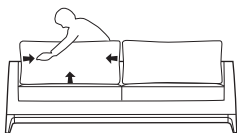


CARE FOR FEATHER AND DOWN UPHOLSTERY

To properly maintain the comfort and style of your feather and down sofa, we recommend regular fluffing to prevent the feather and down from clumping and flattening.

Simply pat and punch the cushions and pillows from top down towards the center to redistribute the feather and down evenly throughout which pushes air back into the filling, maintaining its shape and comfort. Repeat the process with each rotation of the cushions and pillows.

Brush your hands over the cushions and pillows for a smoother look when finished.



I GOT IT AT
Amart
Furniture

LEATHER CARE

Dust regularly using a soft, dry and white cloth or a vacuum cleaner with a small brush attachment.

Clean with a soft, damp cloth to avoid grease and dirt buildup.

Remove water-soluble stains with a clean cloth dampened in water and rub them lightly, using a circular motion from the outside in.
Dry immediately with a clean cloth.

Amart Furniture recommends the use of Smart Care products.

Your lounge requires regular cleaning and conditioning to maintain it.

Maintain a distance of at least 75cm away between your sofa and heating sources, including heaters, hairdryers and irons.

Avoid placing your sofa in direct sunlight or under intense indoor light as this WILL cause your sofa to fade.

Amart Furniture recommends your lounge is professionally cleaned at least once per year.

FABRIC CARE

Fabric Care

Dust your sofa, including under the seat cushions, regularly using a soft, dry and white cloth or a vacuum cleaner with a small brush attachment.

Do not use hard brushes; they may damage the surface of the fabric and cause pilling.

Maintain a distance of at least 75cm away between your sofa and heating sources, including heaters, hairdryers and irons.

Avoid placing your sofa in direct sunlight or under intense indoor lights as this WILL cause fading in your sofa.

Do not put coloured textiles on your sofa as dye transfer may occur and is not covered under warranty.

To remove stains, apply recommended cleaners, following the instructions. Dab lightly with a soft sponge.

To remove pills, use a electric/ battery operated machine.

Amart Furniture recommends your lounge is professionally cleaned at least once per year.

I GOT IT AT
Amart
Furniture

ALL ABOUT LEATHER

Leather is a natural material that improves with age, becoming more comfortable and personal. It is soft and supple yet highly durable and versatile.

It breathes, keeping cool in summer and warm during chilly months.

As no two leather hides are the same, every hide is unique. You can expect variations and nuances of shading, evenness and texture.

AMART FURNITURE LEATHER

Each hide is quality controlled with only the best making it through to a sofa. All other inferior hides are rejected.

ANILINE

Full aniline, the finest leather available, exudes beauty like no other. The amount of treatment such as colour or protective pigments used is minimal, showcasing natural markings and colour differences. The luxurious aniline is the most demanding to upkeep.

SEMI-ANILINE

Semi-aniline hides are similar to pure Aniline leather, except that they are treated with an additional protective finish to prolong the colour lifespan. The grain remains unchanged, highlighting natural feature and patterns.

CORRECTED GRAIN

Lightly buffed and pigmented to ensure consistency in colour and texture, protected hides are durable and resistant to stains. This makes the leather extremely friendly for families and suitable for frequently used furniture in the home.

NATURAL LEATHER CHARACTERISTICS

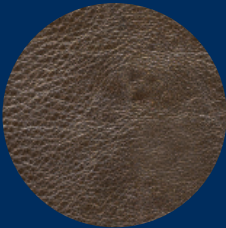


Scar Marks



Scar Marks

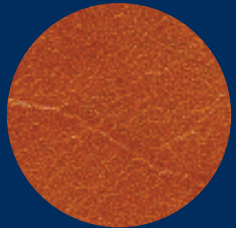
Markings such as grain variation, wrinkles, skin folds, scars or patterns of original hair follicles are inherent in leather; they are not quality defects.



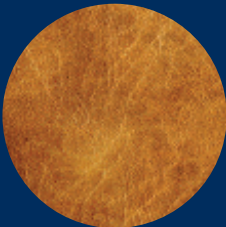
Grubs



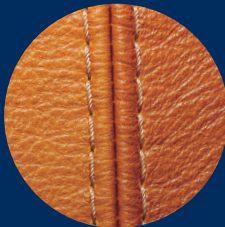
Grain Variation



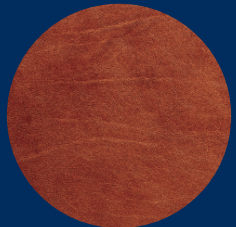
Vein



Fat Wrinkles



Colour Variation



Necklines

OPERATING INSTRUCTIONS FOR ELECTRIC RECLINER

TO RECLINE

Press front button on side of chair to first extend footrest.
Release when desired position is reached.

TO RETRACT

Press rear button found on side of chair until footrest returns to closed position.

OPERATING INSTRUCTIONS FOR ELECTRIC RECLINER:



1. Press to activate backrest. Backrest will recline.
Release when desired position is reached.



2. Press to activate both backrest and seat.
Backrest will recline, and seat will extend with foot panel.
Release when desired position is reached.



3. Press to activate foot panel.
Foot panel will contract. Release when desired position is reached.



4. Press to activate backrest.
Backrest will recline.
Release when desired position is reached.

5. Press to activate both backrest and seat.
Backrest will straighten, and seat and foot panel will contract.
Release when desired position is reached.

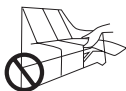


WARNING

Do not allow children or pets to play on or with mechanised furniture, including extended footrest. Exercise close supervision when mechanised furniture is used by, with or near children, pets or disabled persons.



Avoid operating mechanised furniture around moving persons.



Keep hands and other objects away from openings in mechanised furniture.



Do not place mechanised furniture near power cords. Avoid entangling mechanised furniture in power cords.



Avoid liquid contact with any electric component.



Switch off and unplug mechanised furniture when not in use, and before addition or removal of parts.

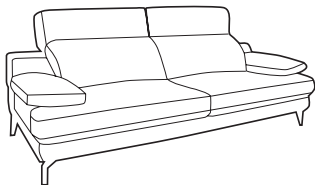


Never operate mechanised furniture if cord or plug is damaged, malfunctioning or damaged. Contact supplier for examination and repair. Do not tamper with electrical components.

SOFAS WITH ADJUSTABLE HEADRESTS AND ARMRESTS

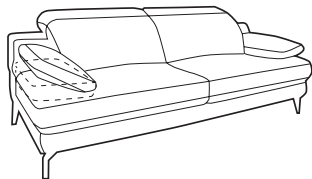
Your Amart sofa may come with adjustable headrests and armrests, providing greater flexibility in head, neck and arm support.

ADJUSTING HEADREST AND ARMREST



TO RAISE

Lift headrest/armrest upwards. Clicking sound indicates angle lock position.



TO LOWER

Lift headrests/arm to release angle lock. Push downwards.

I GOT IT AT
Amart
Furniture

Amart
Furniture